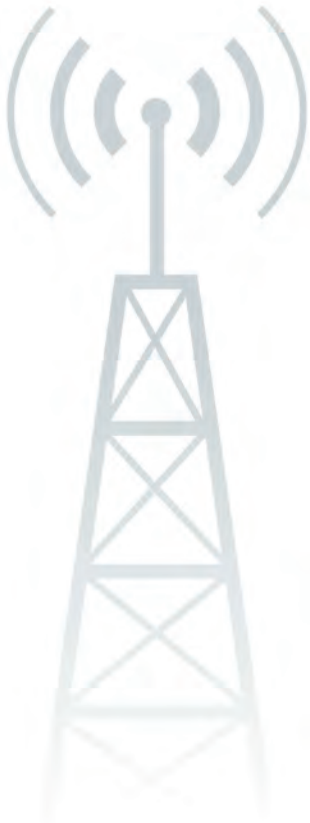


# FLEXIBLE WIRELESS TEST SOLUTIONS for the Lab



~7 BILLION NEW  
SMARTPHONES 2013-2017

Gartner 2013

30 BILLION CONNECTED  
DEVICES BY 2019

ABI Research 2013

>50% OF DATA IS MOBILE  
VIDEO TODAY, 66% BY 2017

Cisco 2013

1000X DATA  
GROWTH CHALLENGE

4G Americas 2013

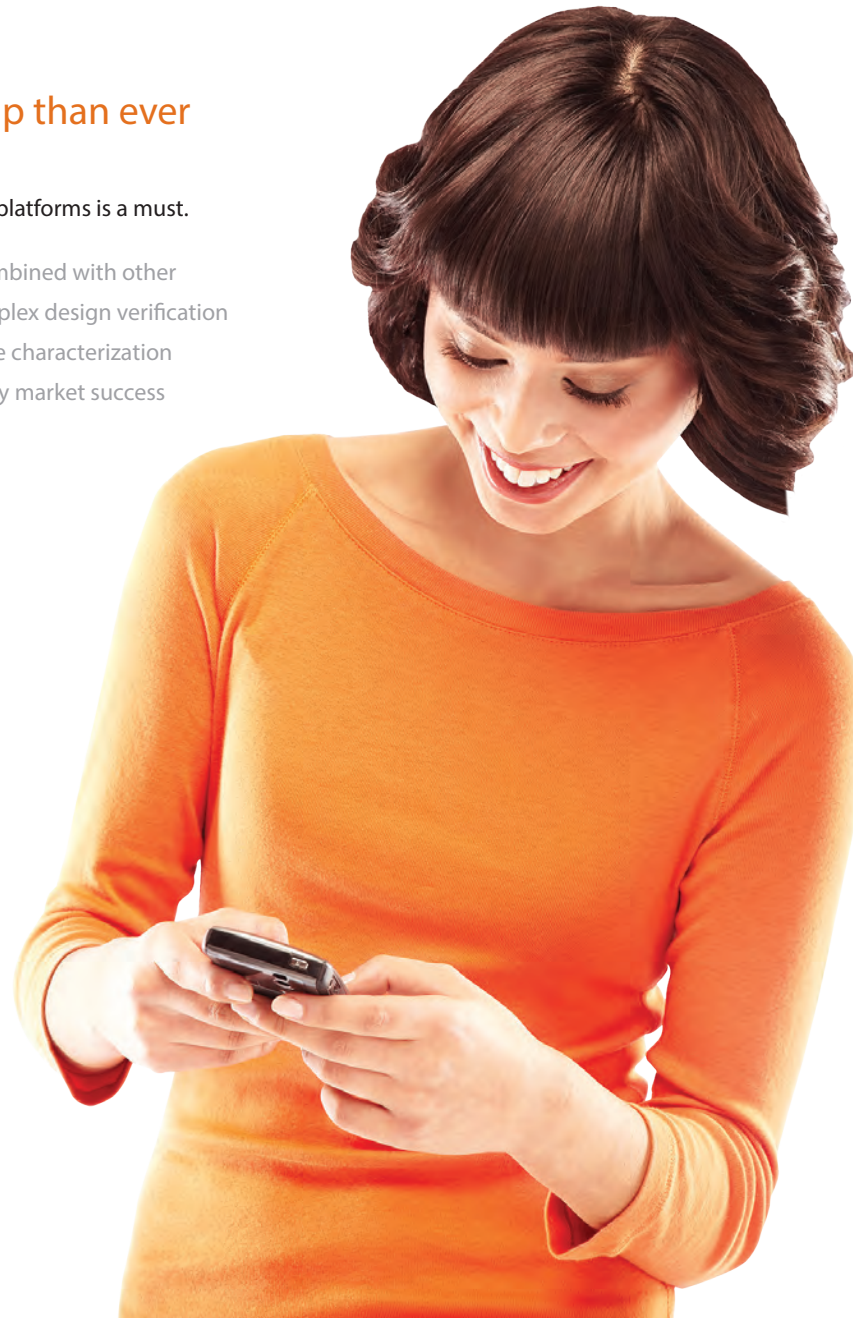
# MORE DEVICES, MORE DATA, MORE CONNECTED...EVERYWHERE, ALL THE TIME.

You're pushing more data through your chip than ever before and the demand is only going up.

Seamless functionality across different carriers, hardware and software platforms is a must.

As technologies continually evolve, become more complex, and are combined with other technologies in smaller devices, you are faced with an increasingly complex design verification task. You need to meet the demands of this new world. Getting accurate characterization data fast from your test chips and first silicon to design is critical for early market success and easy production rollout.

You need to keep up with the demands of advancing technology.  
You need LitePoint.



Introducing the  
LitePoint® zSeries®  
The fully integrated,  
flexible wireless  
standards-focused  
test platform.

Pre-validated standards, easy-to-use test apps

Fast device data collection...spend more time taking data, less time writing code.

The zSeries is an innovative new approach to wireless chipset testing and validation.

With the LitePoint zSeries, your test engineers work at the standards level. They simply select the device mode, decide the right modulation, list the range of test conditions and click "Run." Instrument control, DUT synchronization and real-time DSP processing are all built-in. Your test engineers are able to completely skip instrument and test code writing and get right to collecting device data.

The zSeries integrates into your existing infrastructure and seamlessly connects to your data automation systems. This means your results automatically get delivered to where they are needed most.



zSeries for lab testing of RF power amplifiers and front end modules, RFIC chipsets, and MIMO characterization. The LitePoint's zSeries delivers accuracy, the highest engineering throughput and comes from the leader in wireless test...LitePoint.

zSignal DPD Test App



zSignal WLAN Test App



Preprogrammed test apps let you focus on your vital tests, not writing code



YOU NEED SOMETHING THAT WORKS TODAY.

A code writing environment isn't going to get your product to market fast. LitePoint provides predesigned test apps that enable you to test today.



## Sequencer

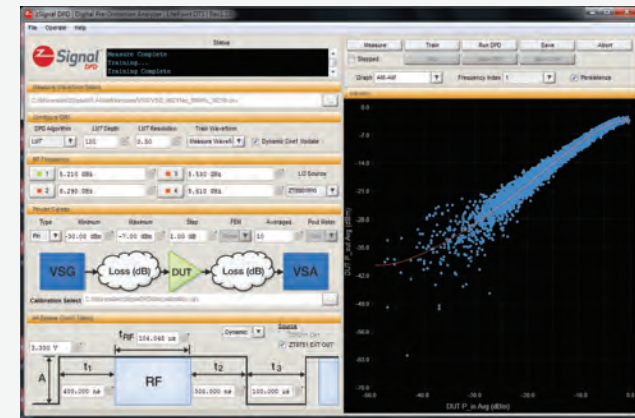
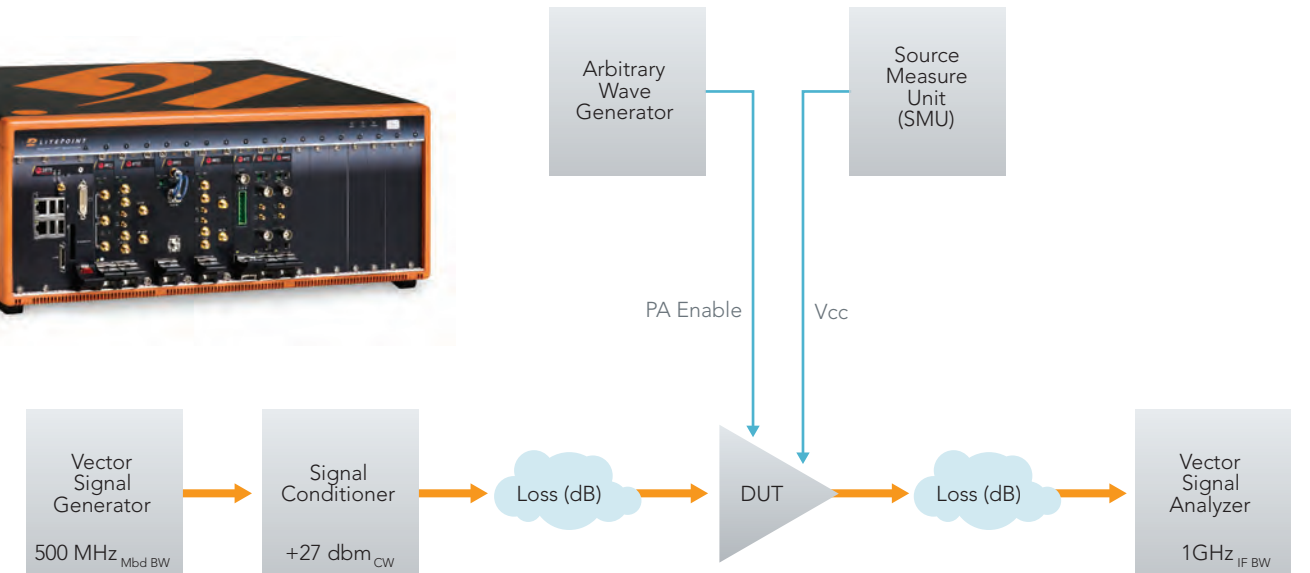
### Tabular automated characterization

A built-in tool that automatically runs test apps over a range of RF power, supply voltage, modulation, temperature, channel frequency or other sweep parameters. Individual measurements and entire test app blocks are easily enabled or disabled for comprehensive first silicon testing and design-revision spot checks. The datalog output is a standard CSV file ready for analysis... all without ever having to write a single line of code.

> NO CODE WRITING



## Lab-Grade Precision



## Test Apps

### Standards-focused test apps

The zSeries comes with pre-validated test apps that create and analyze complex waveforms, set DUT and test conditions, and run real-time characterization sweeps in minutes compared to the hours or days spent programming with the last generation "software instruments" approach.

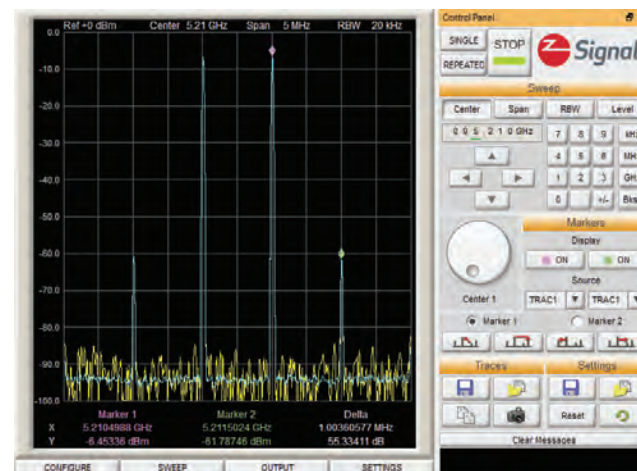
> CHARACTERIZATION SWEEPS IN MINUTES, NOT HOURS

## Instrument Interfaces

### Interactive front panels and driver code

zSeries instruments come with real-time interactive front panels—familiar bench-top user experience—with no training required. Users also have full-access driver code in order to customize test apps or build new apps from scratch when required. All captured results can be saved directly to file.

> FULL ACCESS WHEN NEEDED



The zSeries is the first standards-focused lab test solution with broad instantaneous bandwidth of greater than 500 MHz on both VSA and VSG. A well-equipped base configuration includes:

Vector Signal Analyzer	6 GHz RF input, 1GHz analysis bandwidth 10KHz-1GHz differential baseband input, 10MHz-1GHz Single-ended IF Input
Vector Signal Generator	6 GHz RF output, 500 MHz modulation bandwidth DC-250 MHz differential I/Q outputs
EVM Floor	0.28% (-51 dB) @ 40 MHz      0.50% (-46 dB) @ 160 MHz 0.34% (-49.5 dB) @ 80 MHz
Arbitrary Waveform Generator	RF synchronized PA enable signal source
Source Measure Unit	DUT power
Signal Conditioner	RF power amplification to +27 dBm, or attenuation to -110 dBm
Software	WLAN, LTE, Digital Pre-Distortion, and automation C/C++, LabVIEW™, and COM software drivers & examples
Also available now	Low phase noise local oscillator Digital I/O Digitizer/Oscilloscope RF Switch/Multiplexer

In a 9-slot or 18-slot PXI Express chassis powered by a Core i5 processor, local instrument real-time FPGAs and DSPs.

## FASTER, SIMPLER, SMARTER TEST

READY TO TEST THE LATEST TECHNOLOGIES,  
BUILT FROM THE GROUND UP TO TEST WIRELESS DEVICES

The wireless world has changed dramatically since the smartphone hit the market. Technologies are developed and released faster than ever before. New standards are created and released before the current standards are even widely adopted. You have to stay on the cutting edge to maintain your competitive advantage. To meet these new challenges you need test technologies that are ready to validate the standards of today, and even those you're not ready to implement... yet. LitePoint works with all of the industry leading chipset developers to create test solutions that come out of the box ready for today's most popular technologies, and the next generation. Today LitePoint is shipping test solutions ready to test LTE Advanced, 802.11ac, and 802.11af. LitePoint focuses exclusively on testing wireless devices in the lab and on the manufacturing floor. So you can rest assured if it has to do with wireless testing, LitePoint has you covered.

zSeries Wireless Test Solutions aren't just general purpose "build-your-own" test instruments. The zSeries, as with all LitePoint products, is built to test wireless devices fast, and accelerate your time to market. The zSeries is built on a modular PXI-Express frame for fast and inexpensive upgrading—it can grow and evolve with your test and business needs.

The wireless world and the underlying technologies are evolving at an unprecedented pace. The winners in this unpredictable market will be the companies that are nimble, fast, and innovative. You need test technologies that will help speed you to market ahead of your competition, with the most innovative product, all while maintaining the highest standards of quality. LitePoint ensures the results you get in the lab are the results the end consumer gets out of the package.

LITEPOINT  
IS THE  
INDUSTRY  
LEADER IN  
WIRELESS  
DEVICE  
TESTING  
WITH OVER  
30,000 TESTERS  
DEPLOYED  
AROUND THE  
WORLD.

Copyright © 2014 LitePoint, A Teradyne Company.

All rights reserved

#### RESTRICTED RIGHTS LEGEND

No part of this document may be reproduced, transmitted, transcribed, stored in a retrieval system, or translated into any language or computer language, in any form or by any means, electronic, mechanical, magnetic, optical, chemical, manual, or otherwise, without the prior written permission of LitePoint Corporation.

#### DISCLAIMER

LitePoint Corporation makes no representations or warranties with respect to the contents of this manual or of the associated LitePoint Corporation products, and specifically disclaims any implied warranties of merchantability or fitness for any particular purpose. LitePoint Corporation shall under no circumstances be liable for incidental or consequential damages or related expenses resulting from the use of this product, even if it has been notified of the possibility of such damages.

If you find errors or problems with this documentation, please notify LitePoint Corporation at the address listed below. LitePoint Corporation does not guarantee that this document is error-free. LitePoint Corporation reserves the right to make changes in specifications and other information contained in this document without prior notice.

#### TRADEMARKS

LitePoint and the LitePoint logo are registered trademarks of LitePoint Corporation. zSeries and zSequence are trademarks of LitePoint Corporation. All other trademarks or registered trademarks are owned by their respective owners.

#### CONTACT INFORMATION

LitePoint Corporation  
965 W. Maude Ave.  
Sunnyvale, CA 94085-2803  
United States of America

Telephone: +1.408.456.5000  
Facsimile: +1.408.456.0106

#### LITEPOINT TECHNICAL SUPPORT

[www.litepoint.com/support](http://www.litepoint.com/support)

Doc: 1075-1012-001  
March 2016 Rev 3

